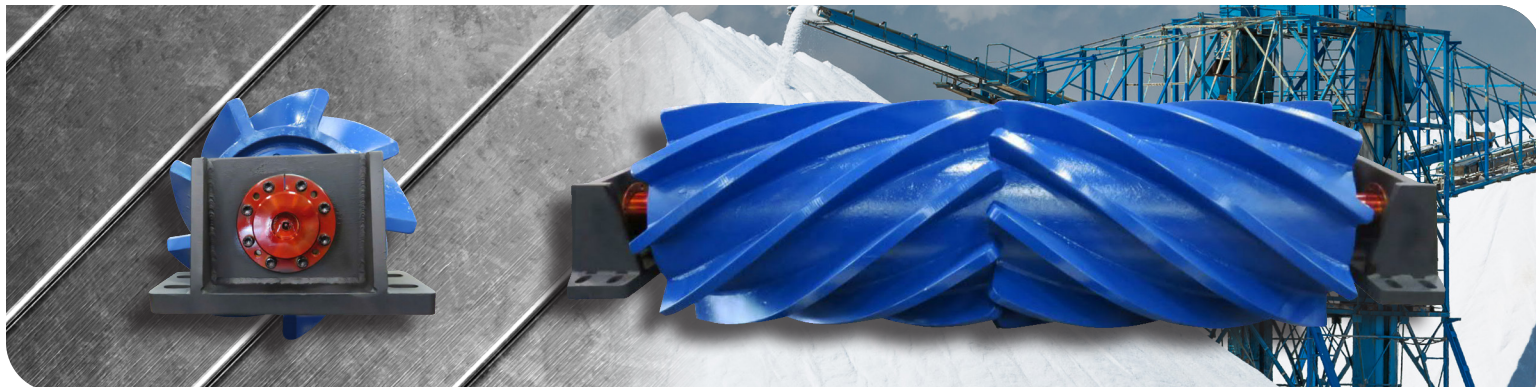




Engineered Dead Shaft Clean Flight® Wing Pulley



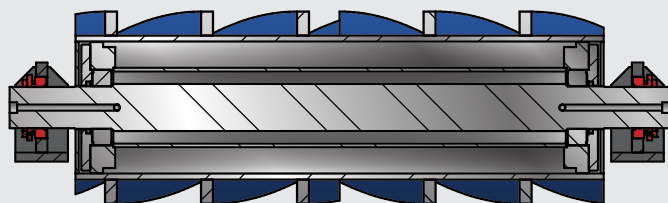
Are your bearings
getting damaged by
harsh applications?
Martin has the
solution with our
new dead shaft Clean
Flight® wing pulley!

Martin's innovative Clean Flight® wing pulley paired with a dead shaft feature can greatly help reduce your conveying application difficulties with corrosive and hard to move materials. The benefits of the Martin dead shaft Clean Flight® wing pulley not only include reducing maintenance and downtime, but also increase the belt life of your conveyor and vastly improve your conveyor's efficiency. Due to the dead shaft design, the bearings are mounted within the end-disc, protecting the bearing from any corrosive contaminants and harsh environmental conditions.

Benefits

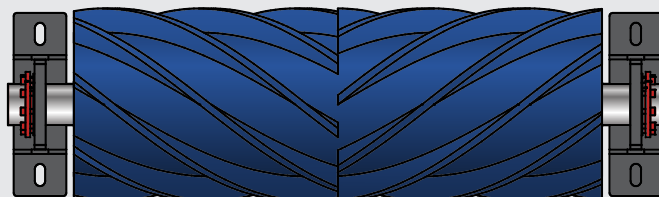
Dead Shaft

- » **Problem solving design** for heavy contamination, space restrictions, reduced moment arm
- » **Purgeable contact seal**
- » **Lubrication through shaft** while pulley is in operation
- » **Support pedestals replace pillow blocks** with the same bolt pattern and shaft height, shaft is held in with a keyless locking device.
- » **Engineered dead shaft drum pulleys** are also available



CFW

- » **Innovative patented robust construction incorporates screw conveyor technology** for improved material ejection
- » **Smooth belt engagement** protects belt life
- » **Noise reduction** of 14 - 22% decibels depending on speed
- » **Less vibration on operation**, because of constant contact
- » **Enhanced belt tracking** contacts the belt at opposing helix angles in the middle



Learn more about Martin and material handling solutions at:
martinsprocket.com • 817.258.3000